

Here Am I

A Missionary Anthem

by Tom Edward Clark
and Kyle S. McKay

Here Am I

A Missionary Anthem

Words and Music
by Kyle S. McKay and Tom Edward Clark

With conviction $\text{♩} = 60$

6

In a

Rall.

12

coun - cil long a - go Be - fore the world be - gan, To e - na - ble our pro -

a Tempo

17

gres - sion God un - veiled a per - fect plan. We would all come down to earth To

17

22



pass a cru-cial test, Those who fi - nish true and faith-ful Would re - ceive all He pos -

22

Piano accompaniment for measures 22-26. The right hand features chords and moving lines, while the left hand provides a steady bass line with quarter notes.

27



sessed. But the gift would not be free, It re - quired a sa - cri -

27

Piano accompaniment for measures 27-31. The right hand has chords and melodic fragments, while the left hand continues the bass line.

32

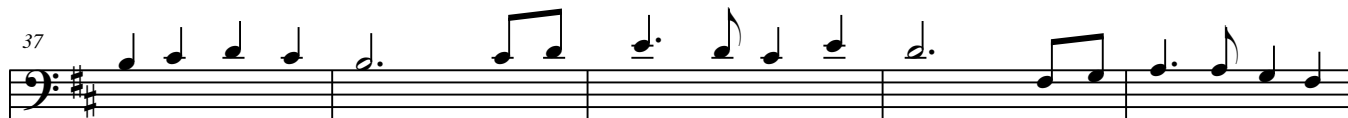


fice A wor - thy lamb must pay the price, And

32

Piano accompaniment for measures 32-36. The right hand features a long, sustained chord in the final measure, while the left hand continues the bass line.

37



Je - sus heard the call And pro - claimed that He would die, And the hea - vens all re -

37

Piano accompaniment for measures 37-41. The right hand has chords and melodic fragments, while the left hand continues the bass line.

42

joiced When he of - fered, "Here Am I." Here Am I

47

Send me forth in - to the earth, Here Am I. Ev - 'ry soul is of great

53

worth Please give me strength, dear Fa - ther; Thy will, not mine, be done, 'Til

58

all thy work is fi - nished, I will be Thy faith - ful son. Here Am I.

64



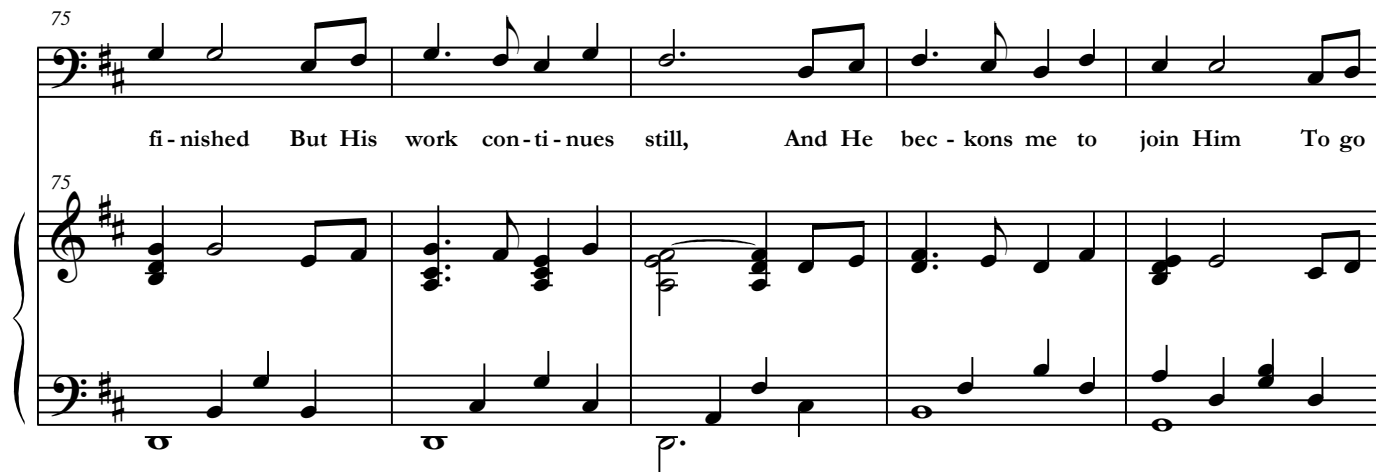
69

Now His sa - cri - fice is



75

fi - nished But His work con - ti - nues still, And He bec - kons me to join Him To go



80

forth from Zi - on's hill. I will go un - to the world To pro - claim the Gos - pel



85

plan, If I fi - nish true and faith - ful I'll re - turn a right - eous man.

90

Divide into two parts

But the way will not be ea - sy, It re - quires a sa - cri - fice Each

95

day I work I'll pay a price, And I'm hum - bled by my

100

weak - ness, But I'm streng - thened by His grace; So in faith and love I rise up And with

Rall. a Tempo Cresc.

105

With more movement

Je - sus take my place. Here Am I. Send me forth in - to the earth, Here Am

rit. *a Tempo*

This system contains the first system of music for measures 105-110. It features a vocal line in the bass clef and a piano accompaniment in the grand staff (treble and bass clefs). The key signature is two sharps (F# and C#). The tempo instruction 'With more movement' is placed above the vocal line. The lyrics are: 'Je - sus take my place. Here Am I. Send me forth in - to the earth, Here Am'. The piano part includes a 'rit.' (ritardando) marking and an 'a Tempo' marking.

111

I. Ev - 'ry soul is of great worth Please give me strength, dear Fa - ther; Thy

This system contains the second system of music for measures 111-116. It features a vocal line in the bass clef and a piano accompaniment in the grand staff. The key signature remains two sharps. The lyrics are: 'I. Ev - 'ry soul is of great worth Please give me strength, dear Fa - ther; Thy'. The piano accompaniment consists of chords and moving lines in both hands.

117

will, not mine be done, 'Til all thy work is fi - nished, I will be Thy faith - ful

This system contains the third system of music for measures 117-122. It features a vocal line in the bass clef and a piano accompaniment in the grand staff. The key signature remains two sharps. The lyrics are: 'will, not mine be done, 'Til all thy work is fi - nished, I will be Thy faith - ful'. The piano accompaniment continues with chords and moving lines.

Here Am I

122

Divide into two parts

son. Here Am I. Here Am I. Send me

Here Am I. Send me

128

forth in-to the earth, Here Am I. Ev-'ry soul is of great worth Please

forth in-to the earth, Here Am I. Ev-'ry soul is of great worth Please

134

give me strength, dear Fa-ther; Thy will, not mine, be done, 'Til all thy work is

give me strength, dear Fa-ther; Thy will, not mine, be done, 'Til all thy work is

Spilt into four parts

139

fi - nished, I will be Thy faith - ful son. Here Am I. Here Am

fi - nished I will be Thy faith - ful son. Here Am I. Here Am

144

I. Here Am I.

I. Here Am I.

rit.

